

Section I

Horse Farm Management

Installation Guide

Version 4.0.x

July 1, 2006

Copyright © 2006 The Jockey Club Information Systems, Inc.

Before you start

By default this software will install as an evaluation version. If you purchased the software, or if you are reinstalling it on a new PC, you will need to contact us for a registration number. The software will not run as a live version without this number. **If you are evaluating the software, you do not need this number.** If you have purchased the software, please plan on running the software for the first time during The Jockey Club Information Systems, Inc. regular business hours. (See Appendix for more information.)

If this is an upgrade, simply install the software. Once you have entered the software key that we provide when you first installed the program, it will continue to function.

Following these steps will install the program and database onto a single PC. If you have purchased the network license, install the database onto only one PC or Server. The program component is then installed on each workstation.

Remember, while we do not expect that you have any problems during the installation of this software, we strongly recommend that you have a current backup of your computer and files.

You may, during installation, see warning messages from your computer's firewall software about application changes that are being made to your system. These warnings are normal, and we suggest that you indicate that the changes are allowed.

System Requirements

O/S – XP Professional, Home or Media Center Edition with SP2 applied, 2000 Server Standard Edition, Server 2003 Standard Edition, Server 2003 Enterprise Edition, Server 2003 Web Edition, 2003 Small Business Server, Vista

CPU – Minimum 550 MHz Pentium III (or equivalent) processor; 2.4 MHz (or higher) Pentium 4 (or equivalent) processor recommended

RAM – Minimum 512 MB RAM - 1G Ram recommended

Hard Disk – Minimum 500 MB of available hard disk space

CD-ROM drive – CD or CD/DVD

Monitor – SVGA (800x600) or higher resolution monitor

(Optional) Internet Connection for program updates and support

First-time install of the software

The program consists of two main parts, the Horse Farm Management and the HFM Database. Both parts must be installed before the program will run.

Also, the HFM software creates a number of reports in the Adobe PDF format. You need to have the Adobe reader installed on your computer in order to see these reports. We have included a copy of this software on the installation CD in the HELP GUIDES area.

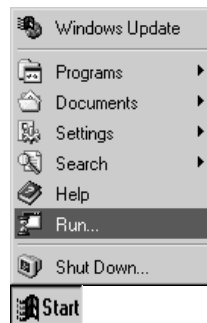
Installing the software

Installation Steps

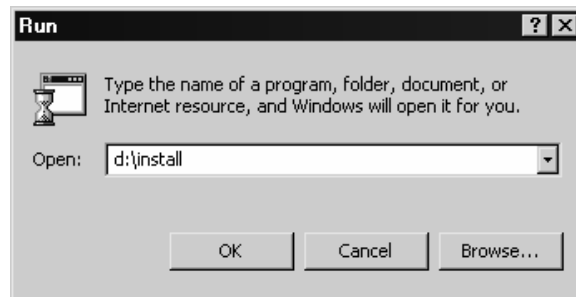
- 1) Insert the program CD-ROM into your CD-ROM Drive.

If the install program does not start automatically:

Select “run” from the Window’s Task Bar by clicking **Start** then **Run**.

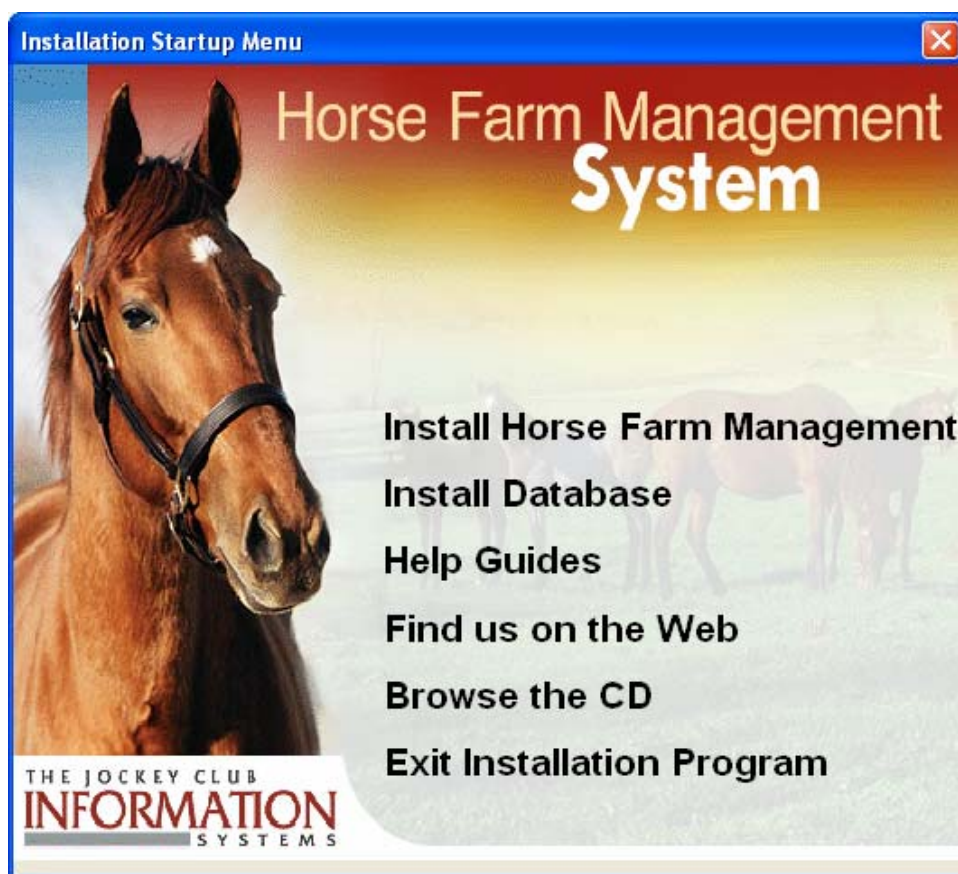


Windows will prompt you for the name of an application to run; type the command **D:\Install**. Then click the **OK** button.



Note: This assumes that “D:” is the drive letter assigned to your CD-ROM drive. If your CD-ROM has been assigned a different letter, substitute your actual drive letter for “D:”

Installation Startup Menu



- 2) Click on "Install Horse Farm Management" and follow the on-screen instructions until the installation of Horse Farm Management is complete. Note: Depending on what components need to be installed, this step could take several minutes to complete. You will see status as each step completes.

Refer to the following pages for detailed installation instructions...

- 3) Click on "Install Database" and follow the on-screen instructions until the installation of Horse Farm Management Database is complete. Note: Depending on what components need to be installed, this step could take several minutes to complete. You will see status as each step completes.

Refer to the following pages for detailed installation instructions...

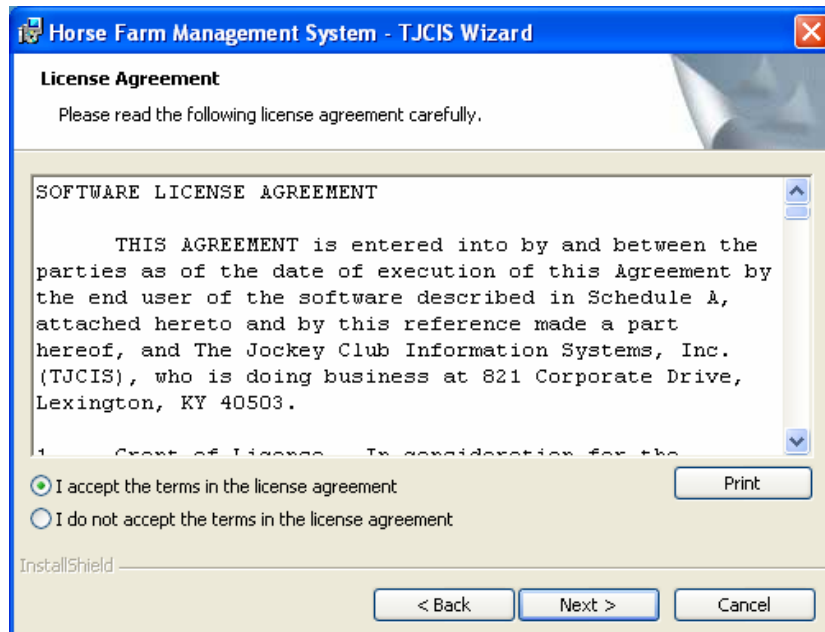
- 4) Click on **Exit** to close the install menu.

Installation of Horse Farm Management

Once you click on Install, you will see the following screen.



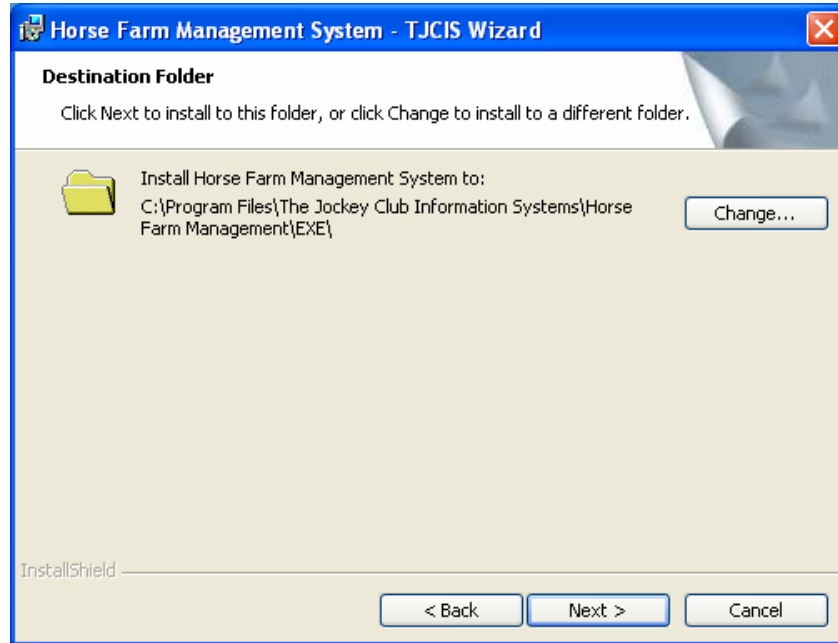
Click **Next >** to continue.



License Agreement screen – Review and click the “I accept” button.

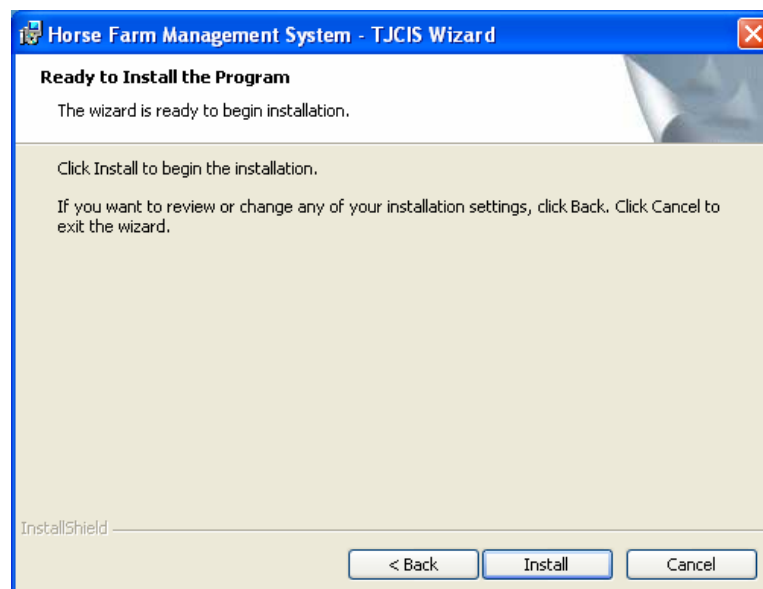
Click **Next >** to continue.

Select Destination Directory screen – Unless there is a reason why a different destination is needed, please let the program install to the default location. **Note:** *The software must be installed on the PC (usually drive C:) and not on a network drive.*



Click **Next >** to continue.

- Start Installation screen



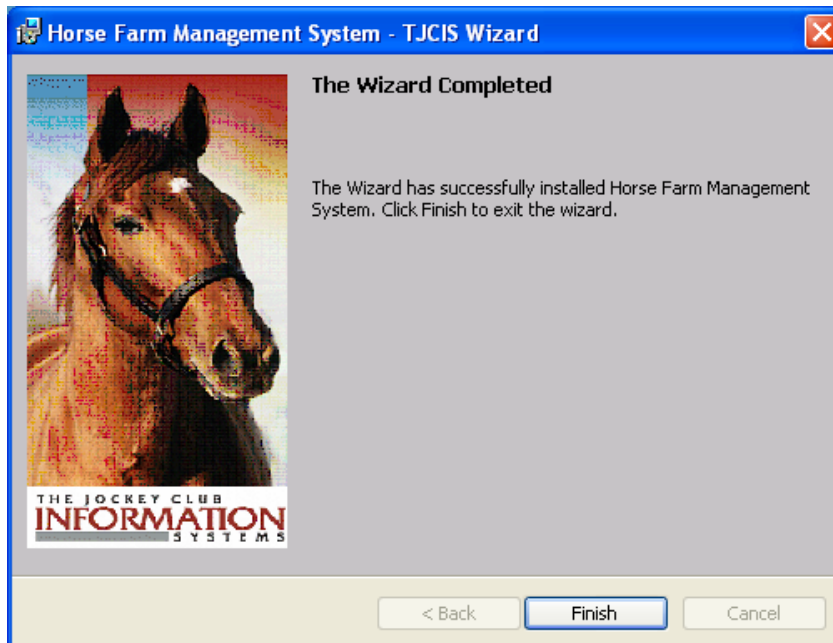
Click **Install >** to continue.

The installation will perform the following tasks:

- Free disk space is checked.
- Files will be copied to the PC's hard drive.
- In-use files are detected.

The install may require you to reboot your system at this point of the install. If a message to reboot is displayed, click **OK** and let the system restart. The install will restart on its own after the PC has restarted.

- Installation Completed



Click **Finish** to continue

The install may require you to reboot your system after the install is complete. If a message to reboot is displayed then click **OK** and let the system restart.

Once you have completed this step, you will be returned to the menu on the installation CD.

Note: *If you are installing the software on a network, this install must be repeated for each PC workstation that will run the application.*

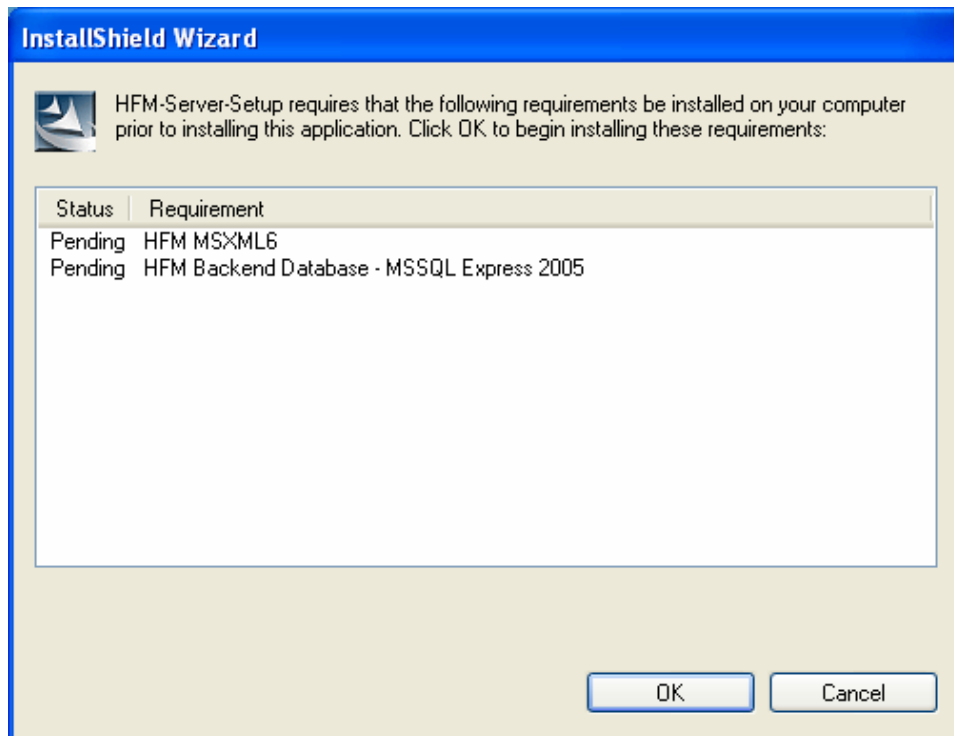
Installation of Horse Farm Database

The database is required for the Horse Farm Management software to run.

WARNING:

The database should be installed in one location only.
You should not install a database more than once per farm.

Once you click on Install, you **MAY** see the following screen. The installation program will determine what components are needed and prompt you to install them. If you do not install these elements, the software will not run. The process may take several minutes to complete. If the system needs to reboot, it will restart from where it finished.



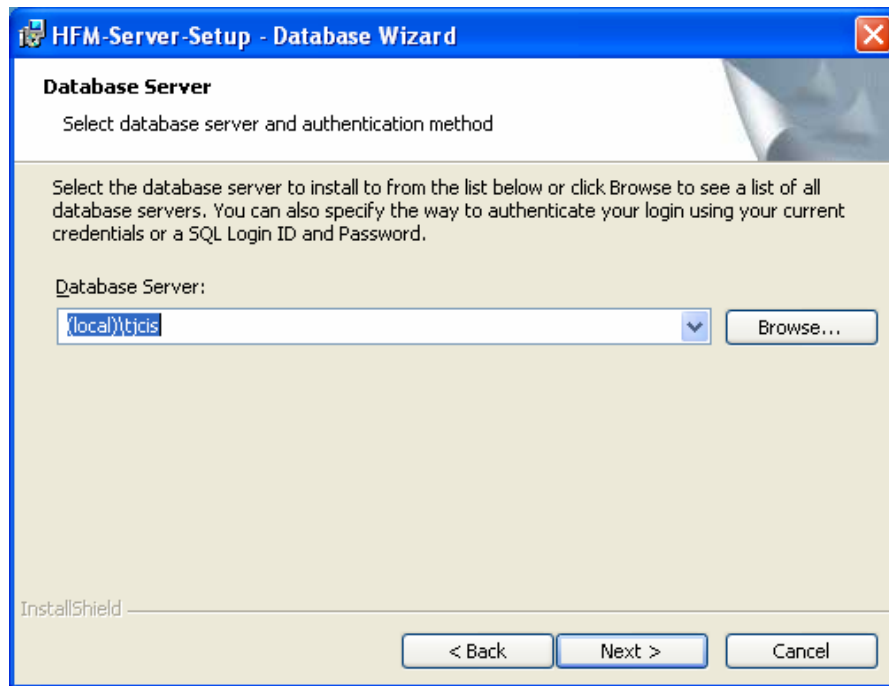
Click **OK** to continue. The SQL engine will be installed.

Once the SQL engine has been installed, the HFM Database install will begin.

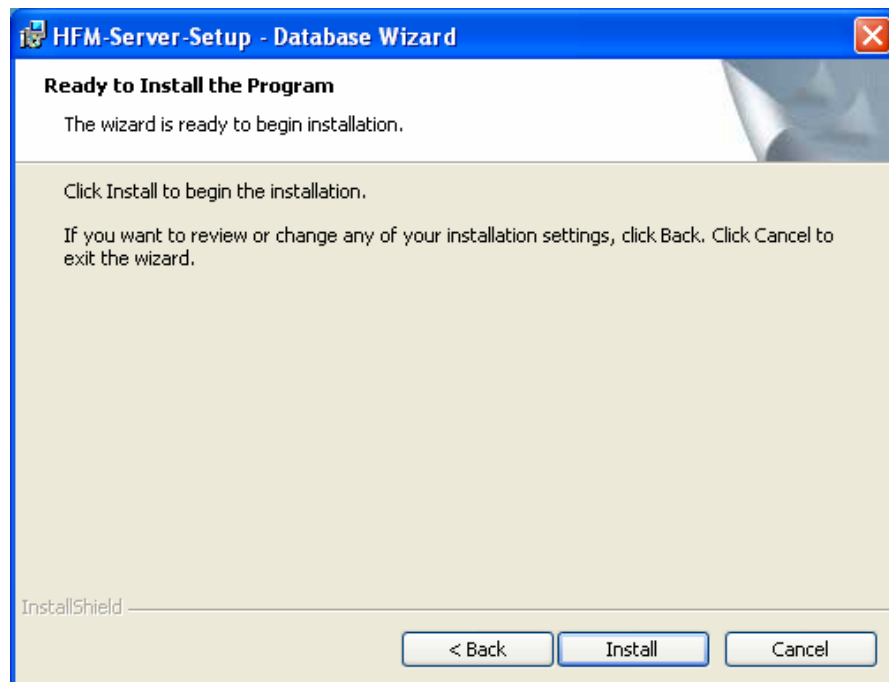


Click **Next >** to continue to the Install screen.

You will now see the database selection screen. The database location (local)\tjcis should be used.

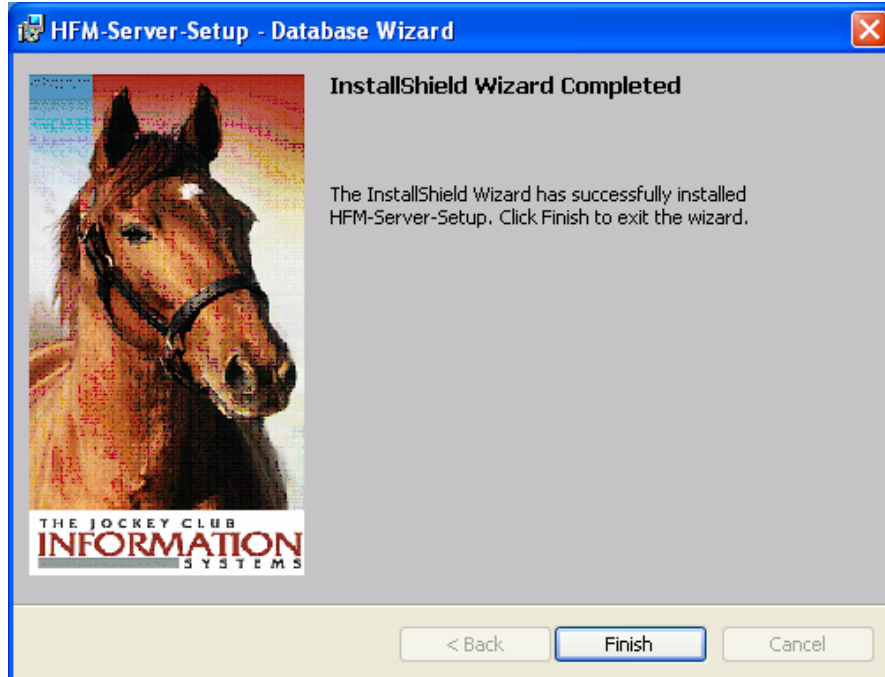


Click **Next >** to continue.



Click **Install** to continue.

When complete, the following screen will appear:



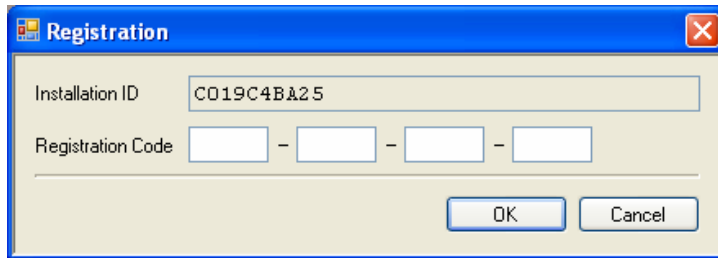
Click **Finish** to complete the process.

You will be returned to the Installation CD menu.

Appendix (The Jockey Club Information Systems, Inc.)

If you have any problems installing the software (or removing it after your evaluation), please feel free to contact us at the numbers below.

Remember, if you are evaluating the software, you may do so as soon as you install the program and database. If however, you have purchased the software, you will need a registration key in order for the software to run in an unrestricted mode. You will need to contact us with the Installation ID during business hours in order to receive this code.



The screenshot shows a Windows-style dialog box titled "Registration". It has a blue title bar with a close button (X) in the top right corner. The dialog contains two input fields. The first is labeled "Installation ID" and contains the alphanumeric string "C019C4BA25". The second is labeled "Registration Code" and consists of four empty input boxes separated by hyphens. At the bottom right of the dialog are two buttons: "OK" and "Cancel".

The Jockey Club Information Systems, Inc.
821 Corporate Drive
Lexington, KY. 40503

Phone: 1-800 -333-1778
(859) 224-2800
Fax: (859) 224-2810
E-Mail: farmsupport@tjcis.com

Regular business hours:
8:00 am – 5:00 pm (Eastern Time) Monday – Friday

Web Address for more information:
www.tjcis.com